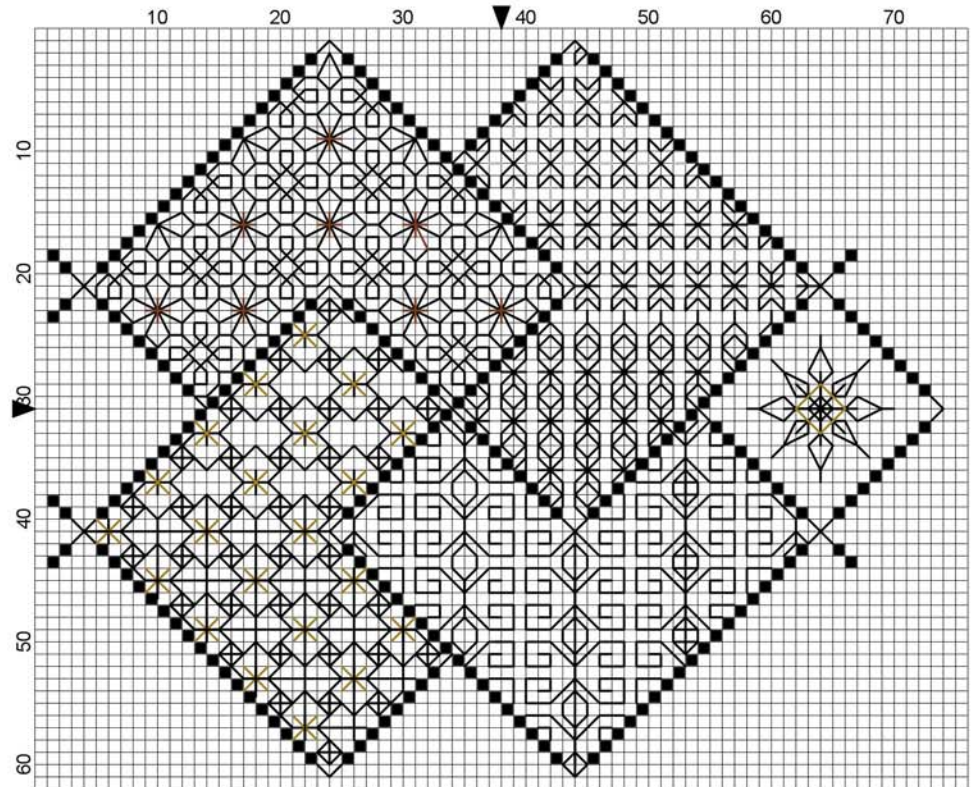
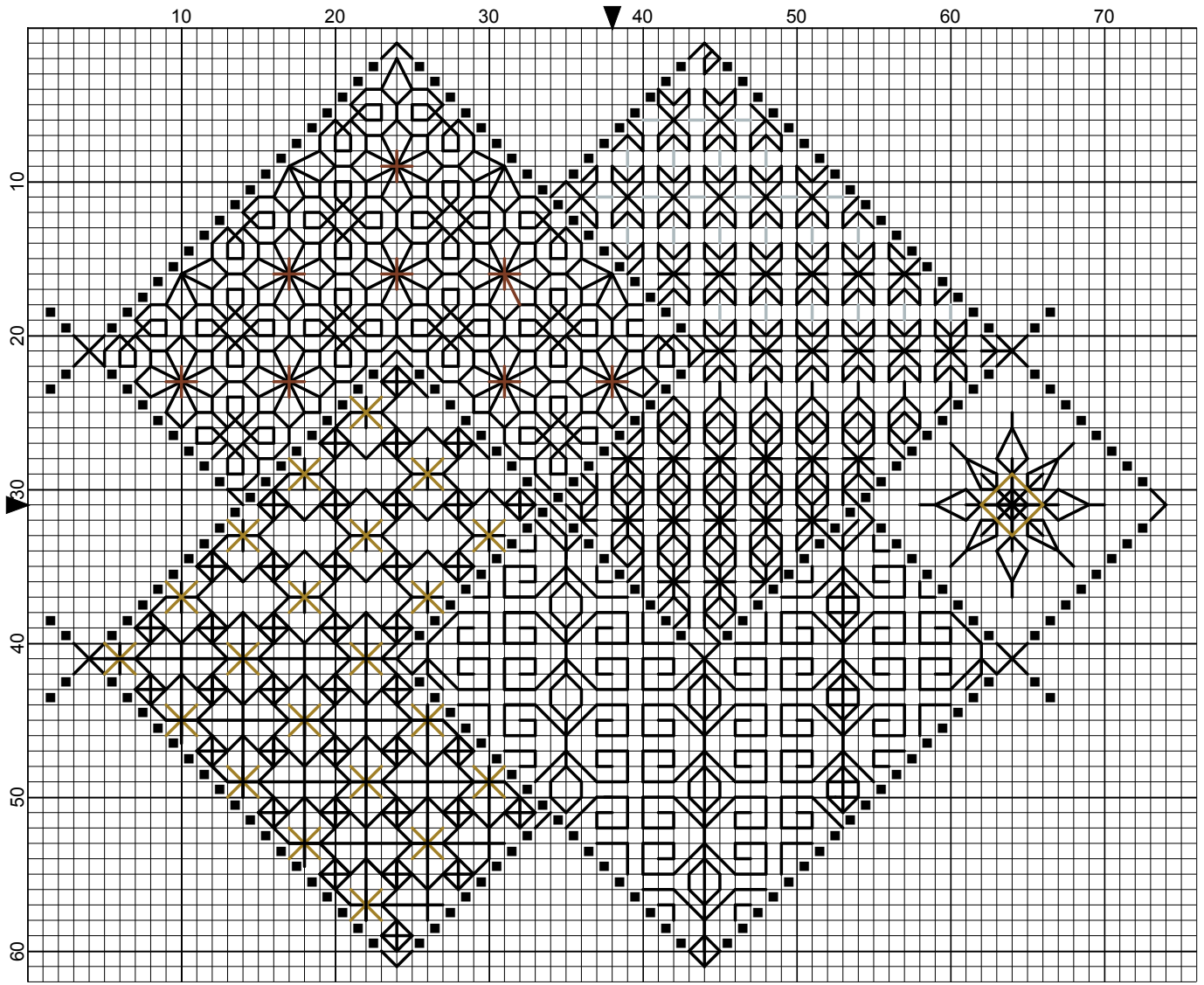


# SAVE THE STITCHES

Blackwork Journey - Designs by Elizabeth Almond

Block 10 Patterns 50 - 54





# Save The Stitches Block 10 Patterns 50 - 54

**Author:** Elizabeth Almond  
**Copyright:** Elizabeth Almond  
**Grid Size:** 76W x 62H  
**Design Area:** 5.21" x 4.29" (73 x 60 stitches)

**Legend:**

■ [2] DMC-310 ANC-403 DLE- black

**Backstitch Lines:**

— DMC-310 black  
— DLE-E301 Copper  
— DLE-E3852 Dark Gold  
— DLE-E415 Pewter

## Block 10

Following on from Block 9 insert the next five patterns into the numbered areas.

Stitches:

Cross Stitch

Back Stitch

Cross stitch is worked in either DMC Cotton Pèrlé, or DMC 310 Black, TWO strands (Frame - cross stitch)  
Diaper filling patterns are worked in ONE strand of DMC 310 unless otherwise stated.

